

Solid–Liquid Equilibria for the CO₂ + R23 and N₂O + R23 Systems

Giovanni Di Nicola · Giuliano Giuliani ·
Fabio Polonara · Giulio Santori ·
Roman Stryjek

Published online: 7 October 2008
© Springer Science+Business Media, LLC 2008

Abstract A recently built experimental setup was employed for the estimation of the solid–liquid equilibria of alternative refrigerant systems. In this paper two binaries, i.e., carbon dioxide + trifluoromethane (CO₂ + R23) and nitrous oxide + trifluoromethane (N₂O + R23), were studied down to temperatures of 117 K. In order to check the reliability of the apparatus, the triple points of the pure fluids contained in the mixture were measured, revealing good consistency with the literature. The results obtained for the mixtures were interpreted by means of the Schröder equation.

Keywords Cascade units · Eutectic · Refrigerants · Solid–liquid equilibria

1 Introduction

In the design of cryogenic processes, it is frequently necessary to estimate the solid–liquid equilibria (SLE) and the eutectic composition of a mixture. The data on SLE are important in the refrigeration industry, defining the lowest temperature limit at which the refrigerant may circulate in the fluid state. In addition, SLE provide theoretical information on the behavior of studied systems at low temperatures in terms of activity coefficients. In spite of this, the SLE for HFC refrigerants are extremely scarce in the literature.

G. D. Nicola (✉) · G. Giuliani · F. Polonara · G. Santori
Dipartimento di Energetica, Università Politecnica delle Marche,
Via Breccia Bianche, 60100 Ancona, Italy
e-mail: g.dinicola@univpm.it

R. Stryjek
Institute of Physical Chemistry, Polish Academy of Sciences,
Warsaw, Poland

Due to the expected temperatures of the SLE of systems formed with CO_2 and/or N_2O + HFC refrigerants that usually span from about 100 K up to 217 K (in case of CO_2 as the mixture component), SLE measurements generally create difficulties in the visual observation of the disappearance of the last amount of the solid phase. Hence, a setup was specifically built [1] avoiding the need of visual observation of phase behavior. Recently, this setup was used to study the SLE of the CO_2 + R125 and N_2O + R125 systems [1], CO_2 + N_2O , CO_2 + R32, and N_2O + R32 systems [2], and CO_2 + R152a and N_2O + R152a systems [3]. In this paper, the system's behavior was measured down to temperatures of 117 K for two binaries, i.e., CO_2 + R23 and N_2O + R23.

2 Description of the Apparatus

2.1 Measurement Cell

The experimental setup is shown in Fig. 1. It is the same as already described elsewhere [1–3], so it will be only briefly described here. The measuring cell (1), with a volume of approximately 47 cm^3 , was made out of a stainless steel cylinder. A stirrer (3) was placed in the cell. The stirrer inside the cell was turned by a magnet (4). Two holes were made in the cover, and a stainless steel tube was inserted through and welded to the first hole for charging the cell with gas, while the second hole was used to contain the platinum resistance thermometer (Pt 100Ω , Minco, Mod. S7929) (2). The magnet

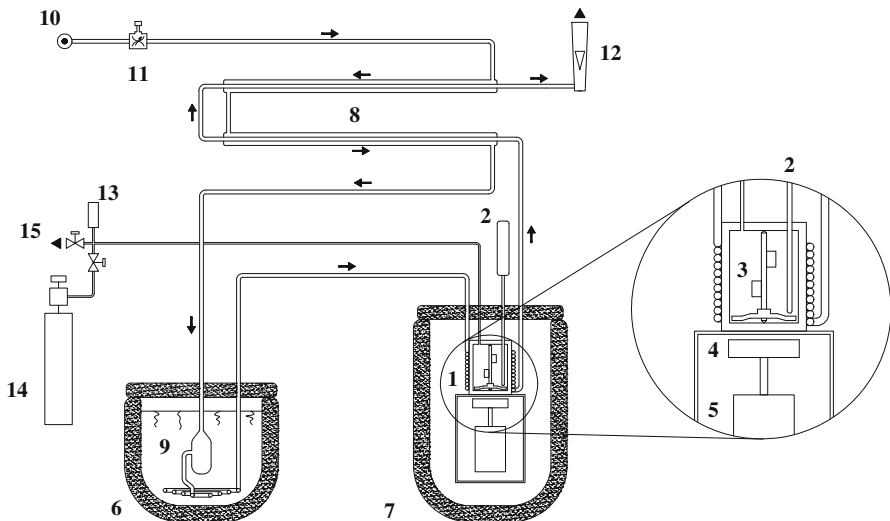


Fig. 1 Schematic illustration of the apparatus: (1) Measurement cell (2) Platinum resistance thermometer (3) Stirrer (4) Magnet (5) Electric engine (6) Dewar with liquid nitrogen (7) Dewar containing the measurement cell (8) Double-pipe heat exchanger (9) Ice trap (10) Dry air supplier (11) Mass flow controller (12) Rotameter (13) Pressure trasducer (14) Charging bottle (15) Vacuum pump system

was housed in a seat made of brass, which was connected to the shaft of an electric engine (5) driving the rotation of the magnet and thus also of the stirrer inside the cell.

The cooling system included four parts:

- (1) A coil consisting of a copper tube, placed inside a Dewar filled with liquid nitrogen (6), which absorbs heat from the carrier fluid (compressed air) flowing inside it;
- (2) A coil with the same structural features as above, wrapped around the measuring cell and removing heat from the cell by surface contact due to the cold air circulating inside it. The assembly consisting of the coil and the cell was placed inside a second Dewar (7) so as to increase its thermal isolation;
- (3) A double pipe heat exchanger (8) for the carrier fluid pre-cooling. A flow of air at room temperature entered the exchanger's inner tube, and as it moved through the tube, it was cooled by the backflow heat exchange with the cold air leaving the coil wrapped around the measuring cell; and
- (4) An ice trap (9) to ensure the stratification on the inside walls of the ice that forms after the liquefaction and subsequent solidification of the humidity in the carrier fluid circulating in the first coil.

A dry air supplier (10) was installed to overcome any problems related to air humidity. A mass flow control was installed upstream from the dehumidifier (11). The airflow was also measured by a rotameter (12). An absolute pressure transducer (HBM, Mod. P8A) (13) was also installed in the charging tube.

3 Experimental Procedure and Uncertainties

3.1 Experimental Procedure

The bottle containing the refrigerant gas (14) was weighed on the electronic balance; then the bottle was connected to the apparatus and to the vacuum pump (15) (Vacuumbrand, Mod. RZ2). A vacuum was created inside the measuring cell and the charging tube as recorded on the vacuum pump gauge (Galileo, Mod. OG510). Then the fluid was charged by opening the valve on the gas bottle. The temperature of the cell was decreased by a flow of compressed air cooled with liquid nitrogen so as to insert the whole mass in the cell, leaving as little as possible in the charging tube. Then the on/off valve was closed, and the gas bottle was disconnected and weighed again to establish the actual mass charged in the cell.

The air was cooled by putting the coil inside a Dewar filled with liquid nitrogen. The coil was then wrapped around the measuring cell. During the measurement procedure, the temperature of the sample inside the cell was carefully controlled to fall at a uniform rate by the air flowing inside the coil. Monitoring the time dependence of the temperature, a cooling curve was obtained for each sample concentration. While the change of phase occurs, the heat removed by cooling is compensated by the latent heat of the phase change, resulting in a temperature drop as shown in Fig. 2. The arrest in cooling during solidification allows the melting point of the material to be identified on the time–temperature curve. To give a phase diagram, the melting points can be plotted versus the composition.

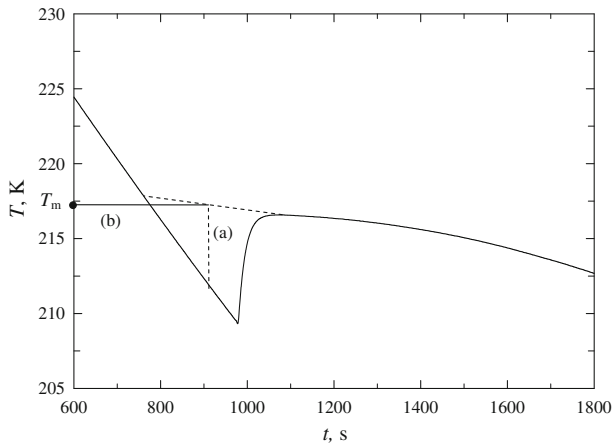


Fig. 2 Acquisition of CO₂ triple-point temperature measurements and Rossini method illustration

The SLE data are measured with the presence of the vapor phase; however, the measured pressures are not reported here as the data were not validated as corresponding to VSLE.

3.2 Uncertainties

All the uncertainties were calculated using the law of error propagation, as reported elsewhere [1]. Here, the previously reported results will be briefly summarized.

The uncertainty in the mass of fluid charged in the measuring cell was less than 0.008 g for a pure fluid. The total uncertainty of the mass of a sample mixture was less than 0.01 g. The uncertainty in composition measurements was estimated to be always less than 0.005 in mole fraction. The total uncertainty for the thermoresistance, using the law of error propagation, was calculated to be less than 0.023 K.

4 Experimental Results

4.1 Chemicals

Carbon dioxide and nitrous oxide were supplied by Sol SpA. Their purities were checked by gas chromatography, using a thermal conductivity detector, and were found to be 99.99 % in mass for both fluids, basing all estimations on an area response curve. R23 was also supplied by Sol SpA; its purity was found to be 99.6 % in mass on an area response curve.

4.2 Pure Fluids

Figure 2 shows an example of a measurement taken for carbon dioxide in which there was evidence of approximately 10 K of supercooling. Different tests were also

conducted for N_2O and R23, using different configurations (with the stirrer on or off). The results for CO_2 and N_2O were reported elsewhere [2]. For R23, three measurements were carried out, giving the following results: triple point at temperatures of 117.5 K, 117.8 K, and 118.0 K. The comparison with the literature value (118.02 K [4]) shows generally good agreement in the triple-point measurements for R23. The triple-point pressure for R23 was too low to accurately measure it with the current apparatus.

4.3 Results for Mixtures

Regarding the mixtures, there are no data on SLE in the literature, so the data we obtained can be used as the starting point for future studies. Measurements were taken using different concentrations of the two components, obtaining a satisfactory number of points, which were then recorded on a temperature/concentration ($T-x$) graph.

Since the vapor–pressure data were not accurately measured at very low temperatures within the declared precision of the used instrument (the pressure values were acquired by an absolute pressure transducer HBM, Mod. P8A, and the global uncertainty of the pressure measurements was estimated to be less than $\pm 3\text{kPa}$ [1]), the vapor–pressure data are not reported in the present paper.

The $T-x$ measurements for the two mixtures considered ($\text{CO}_2 + \text{R23}$ and $\text{N}_2\text{O} + \text{R23}$, respectively) are given in the Figs. 3 and 4. The results are also summarized in Table 1. From the $T-x$ data it is evident that $\text{N}_2\text{O} + \text{R23}$ forms a eutectic ($x_1 = 0.08$ at $T = 115\text{ K}$). Per analogy to other studied $\text{CO}_2 + \text{HFC}$ systems [1–3], it is expected that the $\text{CO}_2 + \text{R23}$ forms a eutectic in the very dilute region as well. However, due to the very dilute composition range, this assumption could not be validated experimentally.

4.4 Rossini Method Corrections

Temperature data acquisitions were corrected with the Rossini method [5] because a constant cooling rate was not guaranteed by our experimental method. This graphic

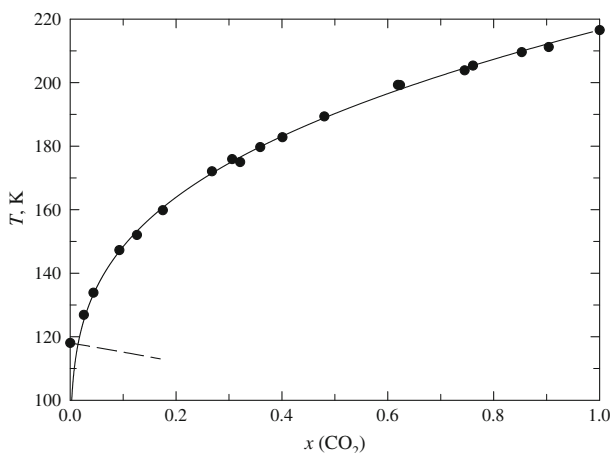


Fig. 3 SLE for the $\text{CO}_2 + \text{R23}$ system. Black symbols denote the experimental points while the lines represent the Schröder equation

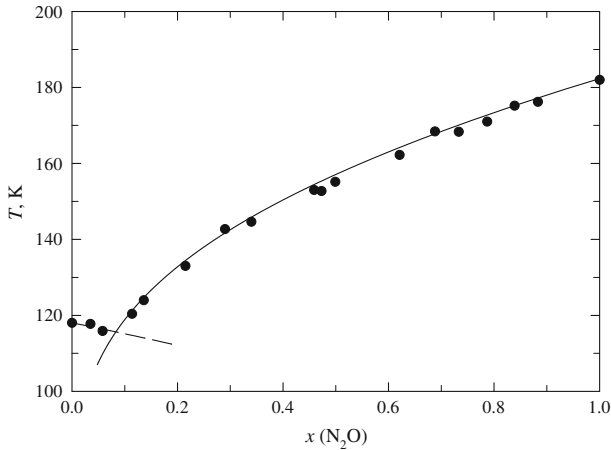


Fig. 4 SLE for the $\text{N}_2\text{O} + \text{R23}$ system. Black symbols denote the experimental points while the lines represent the Schröder equation

method, illustrated in Fig. 2, considers the area contained by the tangent to the curve in the descending stretch after the temperature drop, and the curve itself; then a vertical segment (a) is taken, which divides the area into two equal parts; then a second, horizontal segment (b) is obtained, from the point of intersection between the segment (a) and the tangent to the curve, up until it identifies the temperature corresponding to this new point on the axis of the ordinate (T_m). The entity of the corrections takes into account the fact that the fluid is still in a liquid state during the metastable state (supercooling) that precedes proper solidification. In this phase, the temperature is distinctly lower than the one characterizing the instant when crystallization begins, its amplitude depending mainly on the rate at which the temperature is lowered. The resulting corrections were nonetheless always very limited, of the order of a few tenths of a Kelvin in the majority of cases, and always much less than 1 K.

5 Interpretation of the Results

SLE depend both on the crystals formed in solution and on the properties of the liquid phase. The course of the *liquidus* is well described by the Schröder equation, known since the end of the nineteenth century [6]. The exact course of the *liquidus* for ideal mixtures (i.e., showing a small deviation from Raoult's law) depends mainly on the property of the solute and, in the case of non-ideal systems, on the property of the liquid phase.

The solubility of the solid solute in the solvent (here, R23) can be described by the Schröder equation, which disregarding any difference between the heat capacity of the subcooled liquid solute and solid solute takes the following form:

$$\ln \gamma_2 x_2 = -\frac{\Delta h_m}{RT} \left(1 - \frac{T}{T_m} \right) \quad (1)$$

Table 1 $T-x$ measurements for the $\text{CO}_2 + \text{R23}$ and $\text{N}_2\text{O} + \text{R23}$ binary systems

$\text{CO}_2(1) + \text{R23}(2)$		$\text{N}_2\text{O}(1) + \text{R23}(2)$	
x_1	$T(\text{K})$	x_1	$T(\text{K})$
0.000	118.02	0.000	118.02
0.026	126.89	0.035	117.73
0.044	133.85	0.058	115.88
0.093	147.26	0.114	120.39
0.126	152.05	0.136	123.97
0.175	159.83	0.215	133.00
0.268	172.06	0.290	142.68
0.306	175.92	0.340	144.65
0.321	174.98	0.459	152.99
0.359	179.69	0.473	152.71
0.401	182.78	0.499	155.15
0.480	189.32	0.621	162.21
0.619	199.30	0.688	168.41
0.623	199.23	0.733	168.32
0.745	203.86	0.787	171.00
0.761	205.34	0.839	175.18
0.853	209.59	0.883	176.21
0.904	211.19	1.000	181.99
1.000	216.52		

where the subscript 2 denotes the solute and the subscript m denotes the property at the melting point. Assuming as a first approximation that the solute's activity coefficient $\gamma_2 = 1$, we can write

$$\ln x_2 = -\frac{\Delta h_m}{RT} \left(1 - \frac{T}{T_m} \right) \quad (2)$$

This simplification leads to the consideration that the solubility of the solid solute is independent of the solvent as far as the assumptions hold. The enthalpies at the melting point (Δh_m) were assumed to be $9020 \text{ J} \cdot \text{mol}^{-1}$ [7], $6540 \text{ J} \cdot \text{mol}^{-1}$ [7], and $4120 \text{ J} \cdot \text{mol}^{-1}$ [4] for CO_2 , N_2O , and R23 , respectively.

The curve of the liquidus calculated with the Schröder equation is included in Figs. 3 and 4. Both systems followed well the Schröder equation. For the $\text{CO}_2 + \text{R23}$ system, good agreement with the equation prediction was evident. For the $\text{N}_2\text{O} + \text{R23}$ system, general agreement with the Schröder equation was evident even if, excluding a couple of points, a systematic deviation of (1 to 2) K was evident at higher N_2O concentrations.

6 Conclusion

The SLE behavior of $\text{CO}_2 + \text{R23}$ and $\text{N}_2\text{O} + \text{R23}$ was measured at temperatures down to 117 K by an apparatus that enabled us to record temperature and composition data. The triple points of the pure fluids contained in the mixture were measured, resulting in good consistency with the literature. The $\text{CO}_2 + \text{R23}$ system showed presumably a eutectic in the very dilute CO_2 region. The $\text{N}_2\text{O} + \text{R23}$ system showed a eutectic ($x_1 = 0.08$ at $T = 115$ K). The measured systems showed good agreement in terms of Schröder equation predictions.

References

1. G. Di Nicola, G. Giuliani, F. Polonara, R. Stryjek, *J. Chem. Eng. Data* **51**, 2209 (2006)
2. G. Di Nicola, G. Giuliani, F. Polonara, R. Stryjek, *Fluid Phase Equilib.* **256**, 86 (2007)
3. G. Di Nicola, F. Polonara, G. Santori, R. Stryjek, *J. Chem. Eng. Data* **53**, 1980 (2008)
4. J.W. Magee, *Int. J. Thermophys.* **21**, 1351 (2000)
5. B.J. Mair, J. A.R. Glasgow, F.D. Rossini, *J. Res. Nat. Bur. Stand.* **26**, 591 (1941)
6. I. Schröder, *Z. Phys. Chem.* **11**, 449 (1893)
7. D.R. Lide, H.V. Kehiaian, *CRC Handbook of Thermophysical and Thermochemical Data* (CRC Press, Inc., Boca Raton, 1994)